

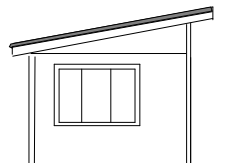
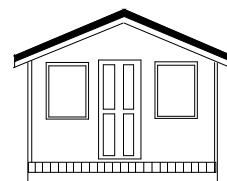
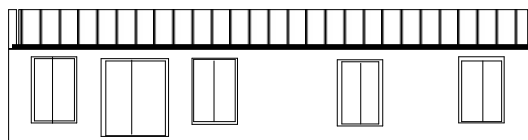
# Timber World

## Portable Cabins and Homes Sample Plans and Inclusions

### Welcome to Timber World Portable Cabins and Homes

We specialize in manufacturing transportable cabins and homes made from quality sustainable wood products. The following sample plans are indicators of our range. All projects are quoted individually so choices of materials, sizes of windows and kitchens, whether you would like built – in wardrobes, or us to paint etc will make a difference to your final price.

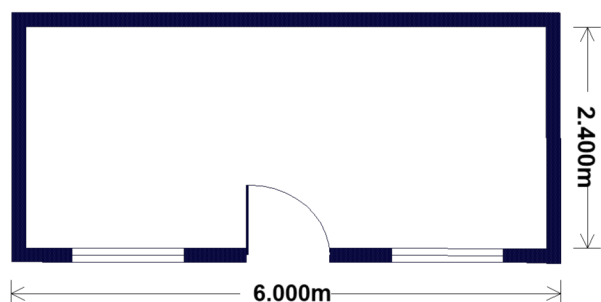
Please contact us for a quotation.



# Timber World

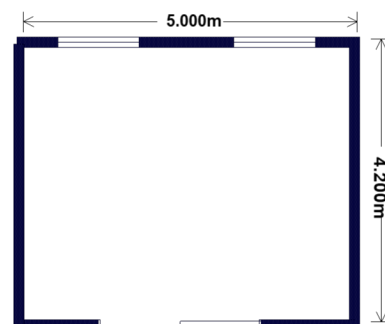
## Portable Cabins—Sample Plans

### OREGON



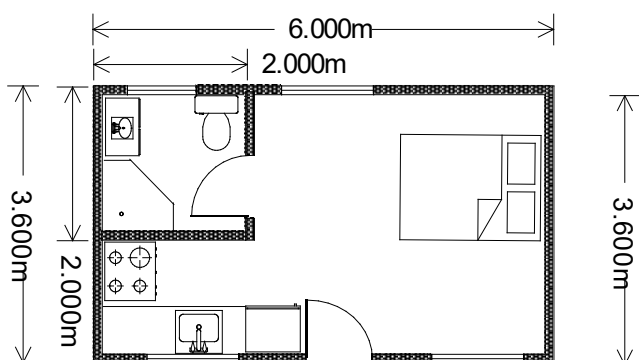
6 x 2.4 Studio

### REDWOOD



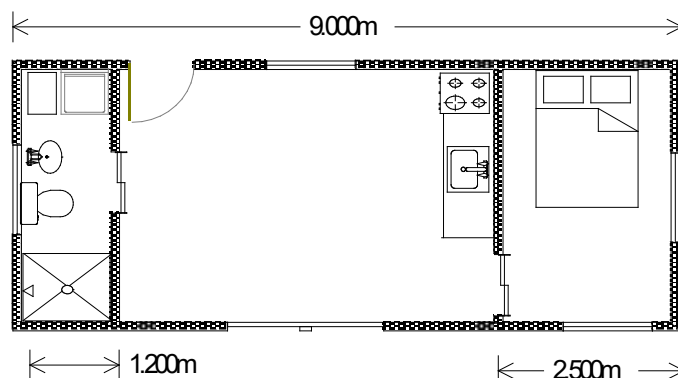
5 x 4.2 Studio

### BALTIC



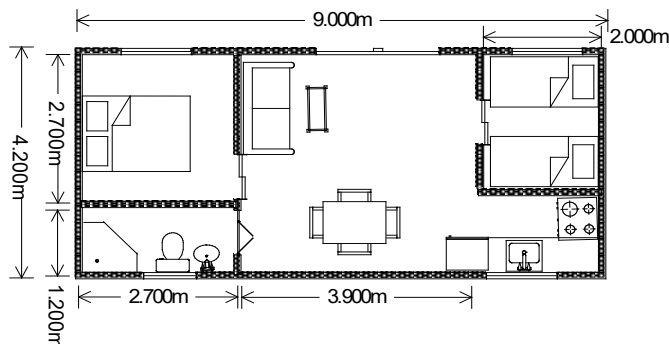
6 x 3.6 One Bedroom

### BLACKWOOD



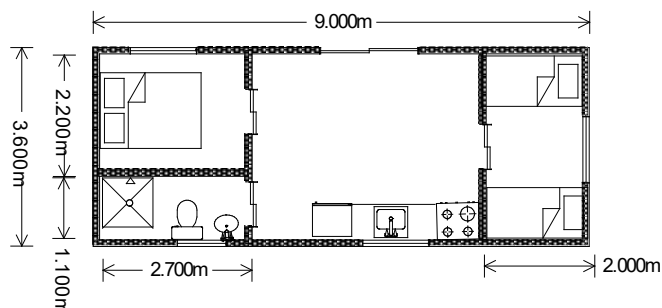
9x 3.6 One Bedroom

### CEDAR



9x 4.2 One Bedroom

### MACROCARPA



9x 3.6 or 11.5 x 4.2 Two Bedroom

Please note: As Timber World build to order these plans can be amended to meet your requirements.

These sample plans are intended as a guide.

Please refer page 9 for prices and inclusions

Prices effective as of July 2018, include GST and are subject to change without notice.

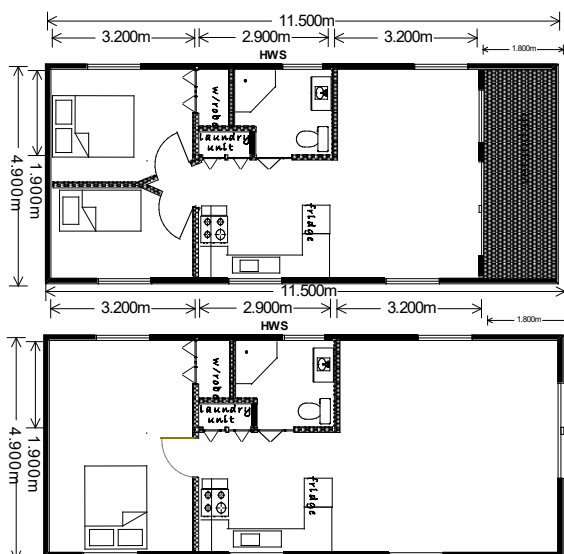
# Timber World

## HUON



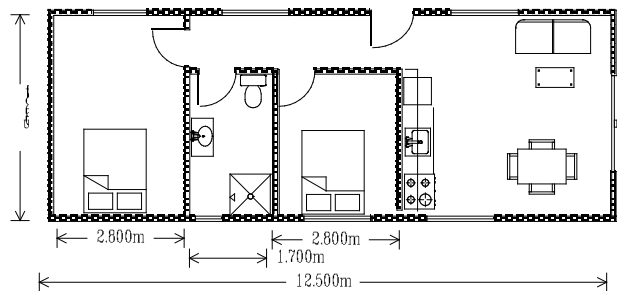
9 x 4.2 11.5 x 4.2 One or Two Bedroom

## LONGFORD



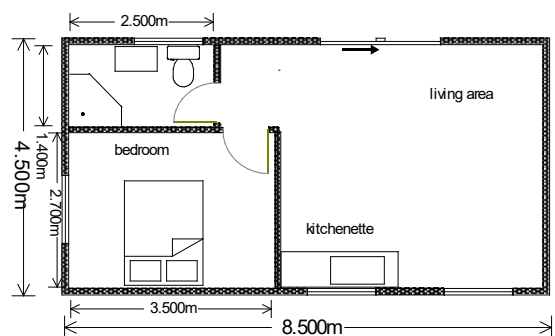
11.5 x 4.9 One or Two Bedroom  
With or without verandah for extra  
Floor space

## DEVONPORT



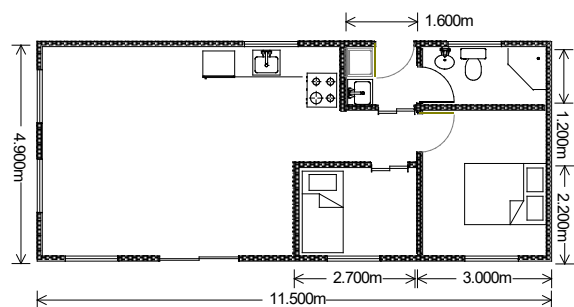
12.5 x 4.5 Two Bedroom

## ROSS



8.5 x 4.5 One Bedroom

## MYRTLE

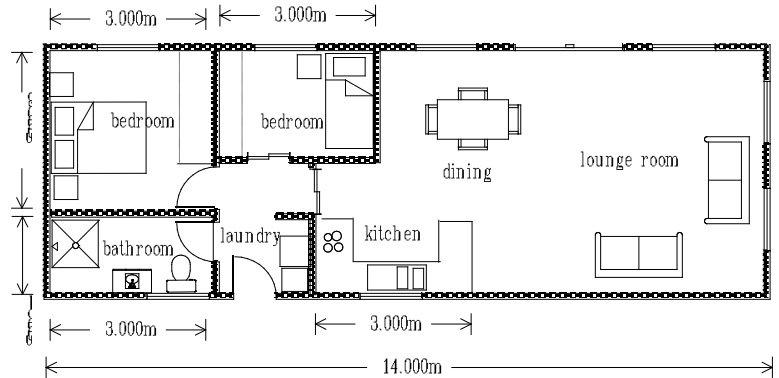


11.5 x 4.9 Two Bedroom

# Timber World

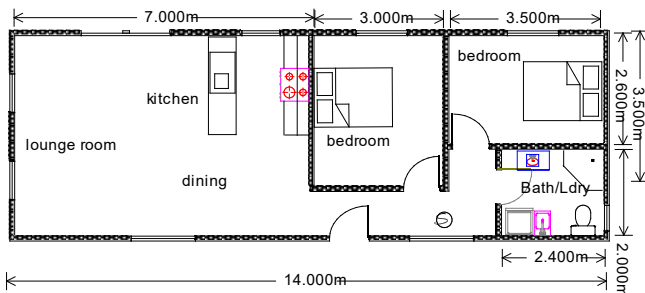
## Legana

14 x 4.9 Two Bedroom



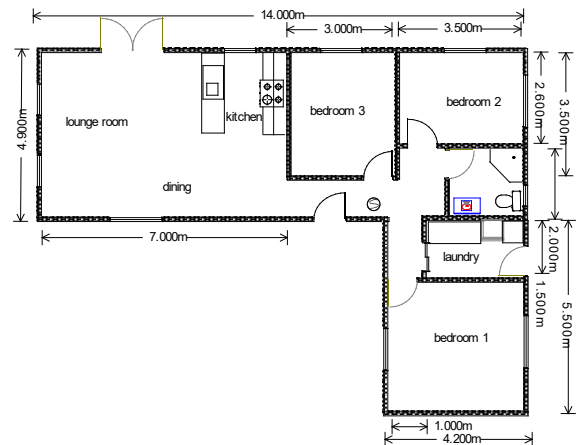
## Westbury

14 x 4.9 Two Bedroom



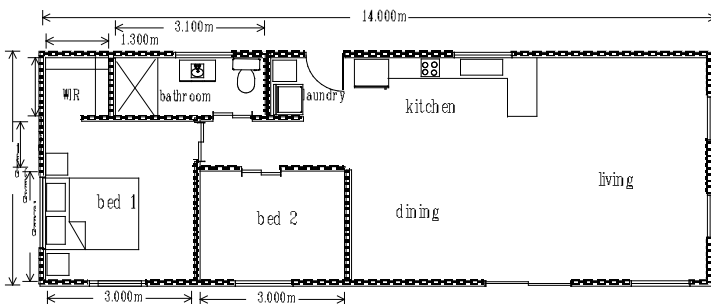
## Westbury Mk 11

3 bedroom and separate laundry  
14mx 4.9 and 5.5 x 4.2



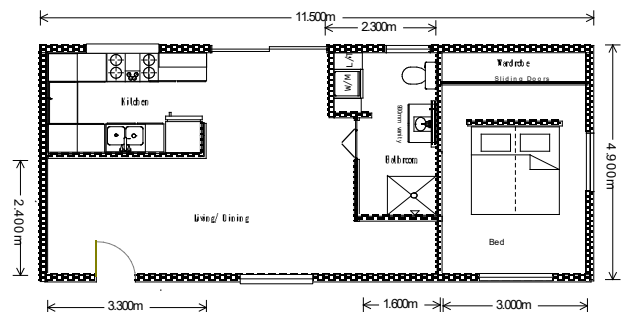
## Beauty Point

14 x 4.9 Two Bedroom



## Strahan

11.5 x 4.9 One Bedroom

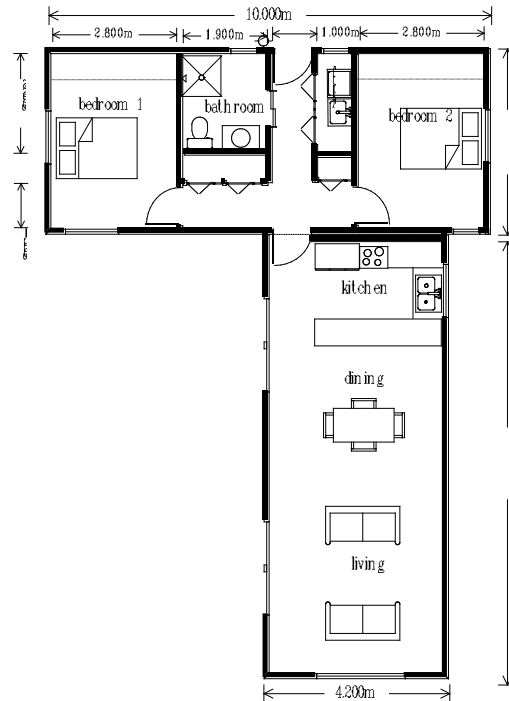


Please note: As Timber World build to order these plans can be amended to meet your requirements.  
These sample plans are intended as a guide only.  
Please refer to page 9 for prices and page 10 for inclusions

# Timber World

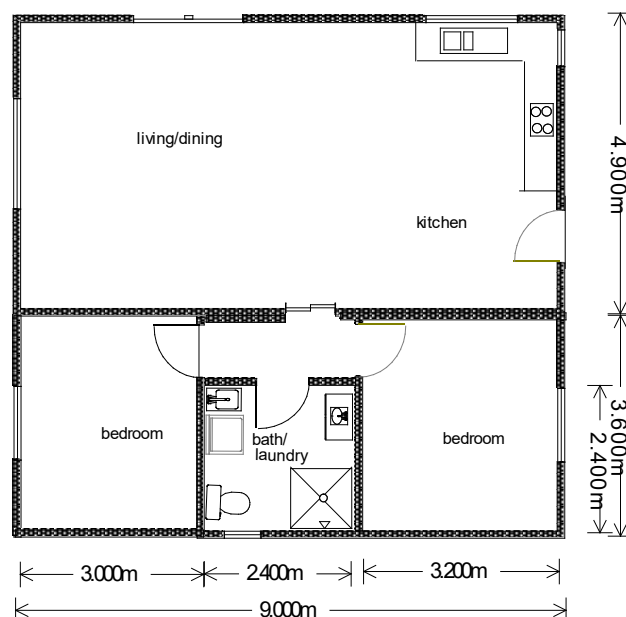
## New Norfolk

2 / 10 x 4.2 2 Bedroom



## PIPERS BROOK

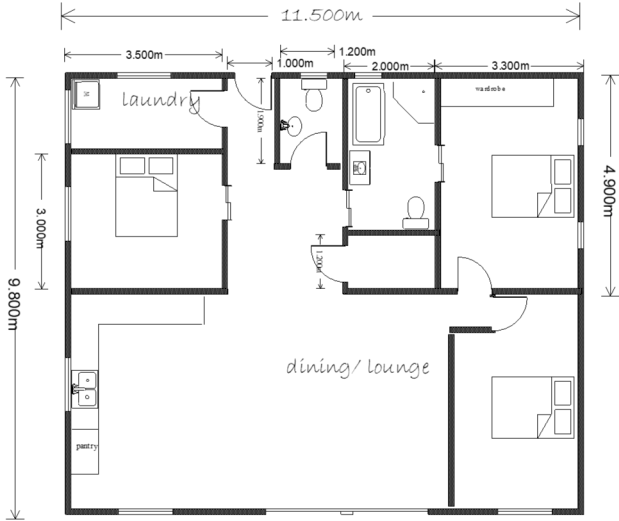
9 x 8.5 2 Bedroom



# Timber World

# Spacious living

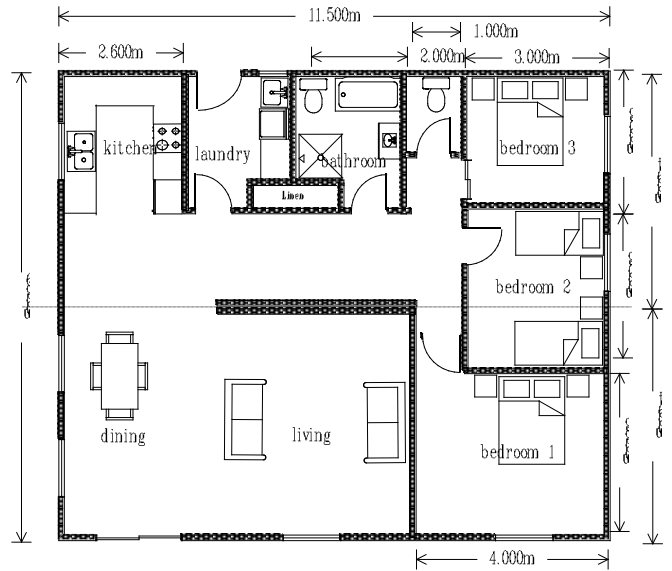
## 11.5 x 9.8 2-3 Bedroom



# St Helens

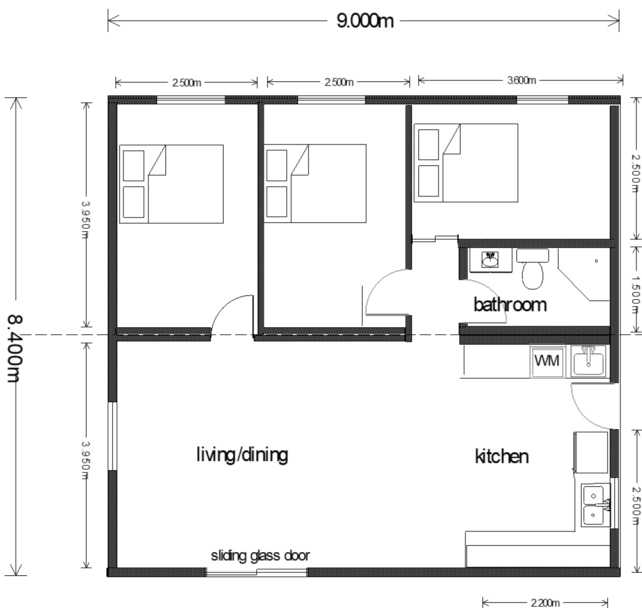
11.5 x 9.8 3 Bedroom

This design can be manufactured in 14m length



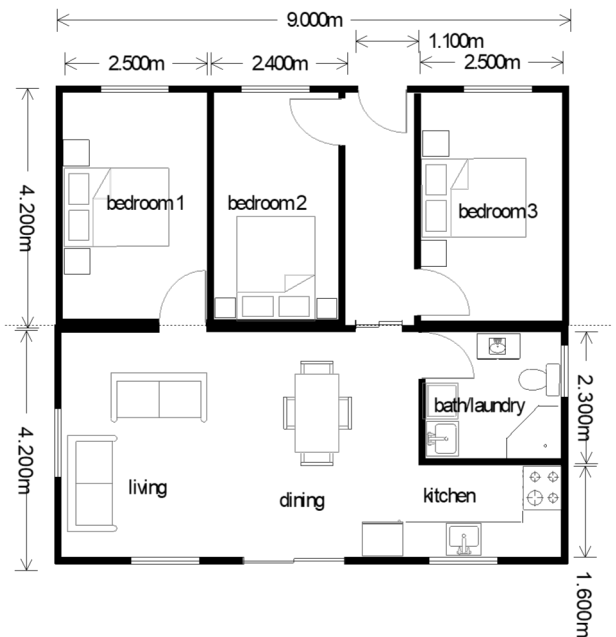
## Economical living

9 x 8.4 2-3 Bedroom



# Beach House

9 x 8.4 3 Bedroom

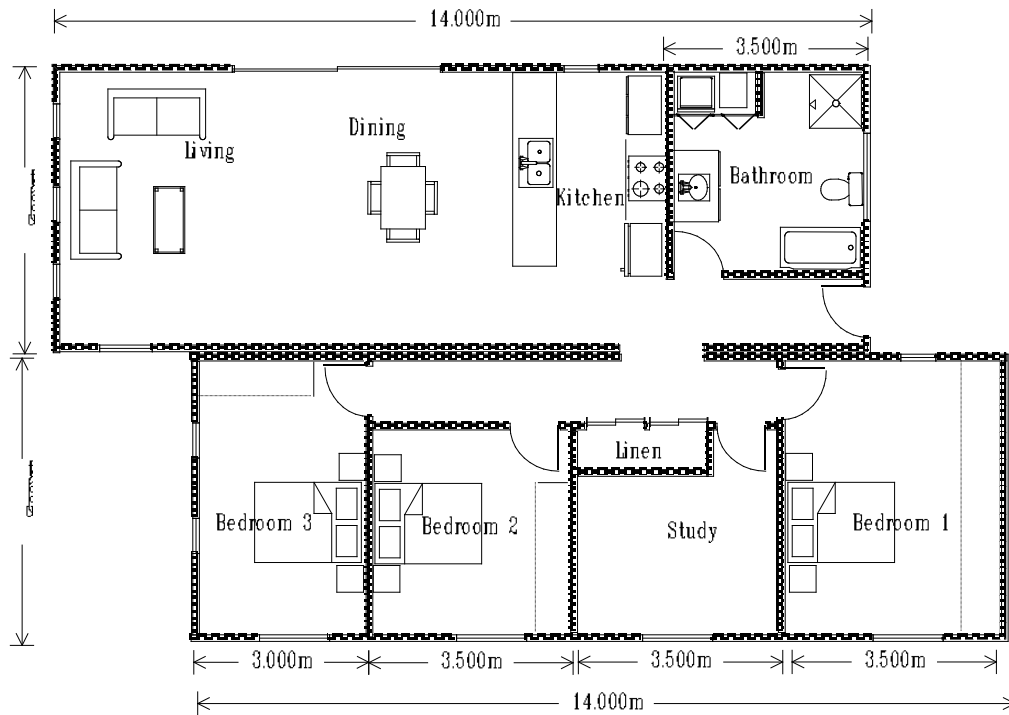


Both of the above sample floor plans can have a study or third bedroom as an option.

# Timber World

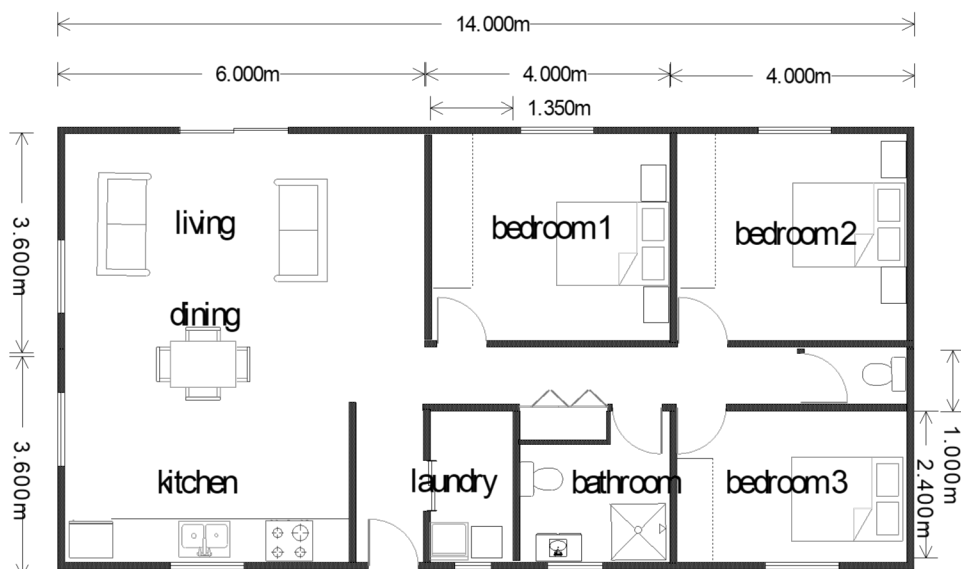
## Port Sorrell

2 / 4.9 x 14 3 or 4 bedroom



## Nubeena

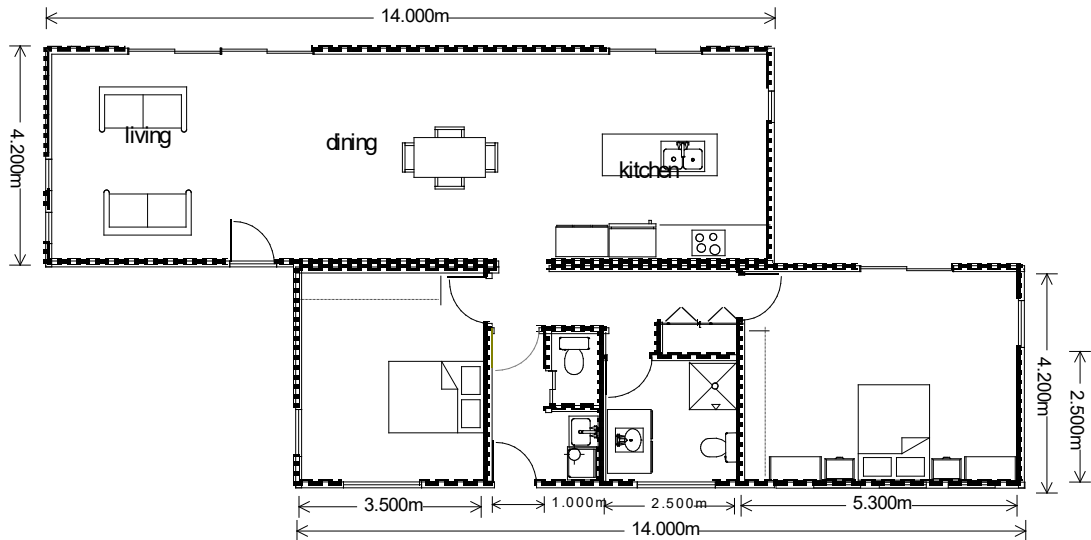
7.2 x 14 3 Bedroom



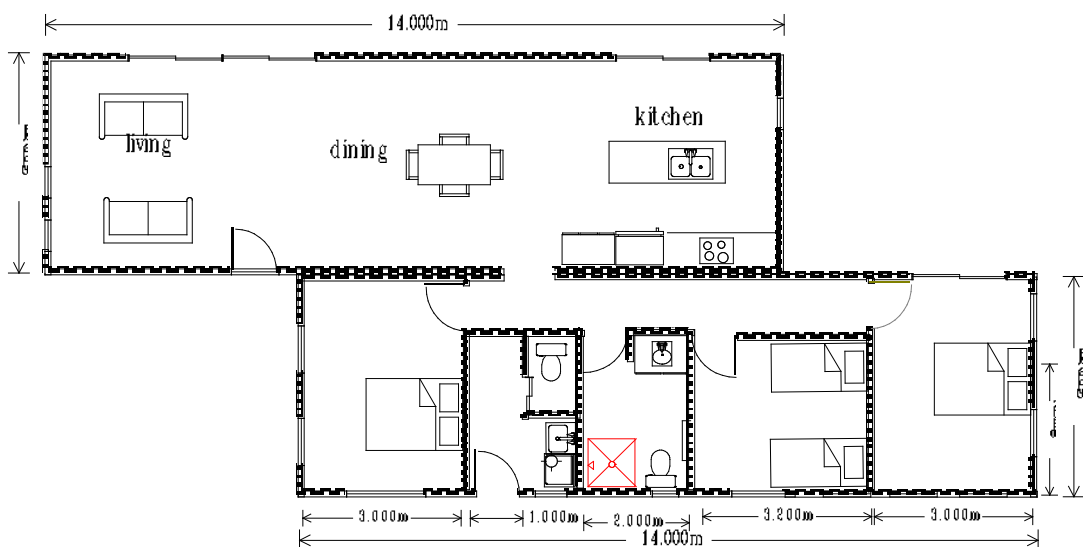
# Timber World

## Bakers Beach

2/ 14 x 4.2 2 Bedroom



2/ 14 x 4.2 3 Bedroom





# Inclusions

All prices are based on the following inclusions as an indicator of sample price. We quote individually for each project with your choices of materials, window sizes, kitchen size and style, wardrobes etc. Note that decks and verandahs can be included to your plans to be built by your onsite tradesperson.

Please contact us for a free no obligation quotation.

- Cedar Weatherboards or Colorbond Cladding
- Colorbond roof
- Oregon rafters and ridge beam.
- Aluminium sliding windows with screens and locks
- Pine or Plaster lining
- 12mm overlay flooring
- Tiles in bathroom and laundry area.
- Insulation- Walls R2.5 Batts and Brane VHP
- Ceiling R5 Batts and Proctor Wrap
- Floor R3.5 Batts
- Laminex Kitchen with sink– white goods not included in price.
- Dual flush toilet suite
- Shower, basin/ vanity and tap ware. Laundry tub and washing machine taps where shown
- Hot water service -160 or 125 litre
- Internal plumbing and wiring
- External four panel wooden door
- Internal four panel doors
- Joining of double units on site, if required.
- Plans and Engineering Certification
- Transport and Crane within 150km. Difficult access sites may incur extra costs.

Please note built in wardrobes are not included. We can provide a quote for these.

## Lock up

- Cedar weatherboards or Colorbond Cladding
- Colorbond roof
- Oregon rafters and ridge beam
- Aluminium sliding windows with screens and locks
- Pine lining in ceiling only
- Sheet flooring
- Insulation-
  - Ceiling -R2.5 Batts and Brane VHP
  - Walls—Brane VHP
  - Floor R3.5 Batts
- Basic wiring in ceiling
- External four panel door
- Plans and Engineering Certification
- Transport and Crane within 150km. Difficult access sites may incur extra costs.

## Options and Extras

Weather boards/ Cladding	Cedar, Colorbond, Oregon, Treated pine, Baltic – round or square edge, Macrocarpa
Roofing	Colorbond, Zincalume, Galvanized, Aluminum Tiles
Lining	Pine, Plaster, Tas Oak or minor species timbers
Flooring	Tasmanian Oak– Prime or Classic grade, Pine, Sheet flooring, or minor species timbers
Windows	Aluminum, Wood - Single or double glazed UPVC- double glazed. Sliding or awning. Choice of size and colour
Painting	We can include internal and external painting in our quotation
Vinyl or Tiles for bathroom and laundry	Colour choice from selected ranges
Kitchen	Price calculated by meter with a choice of door, bench styles and materials. We can include a basic stove or a model of your choice in our quotation
Wardrobes	Price calculated per meter. Choice of door styles available

